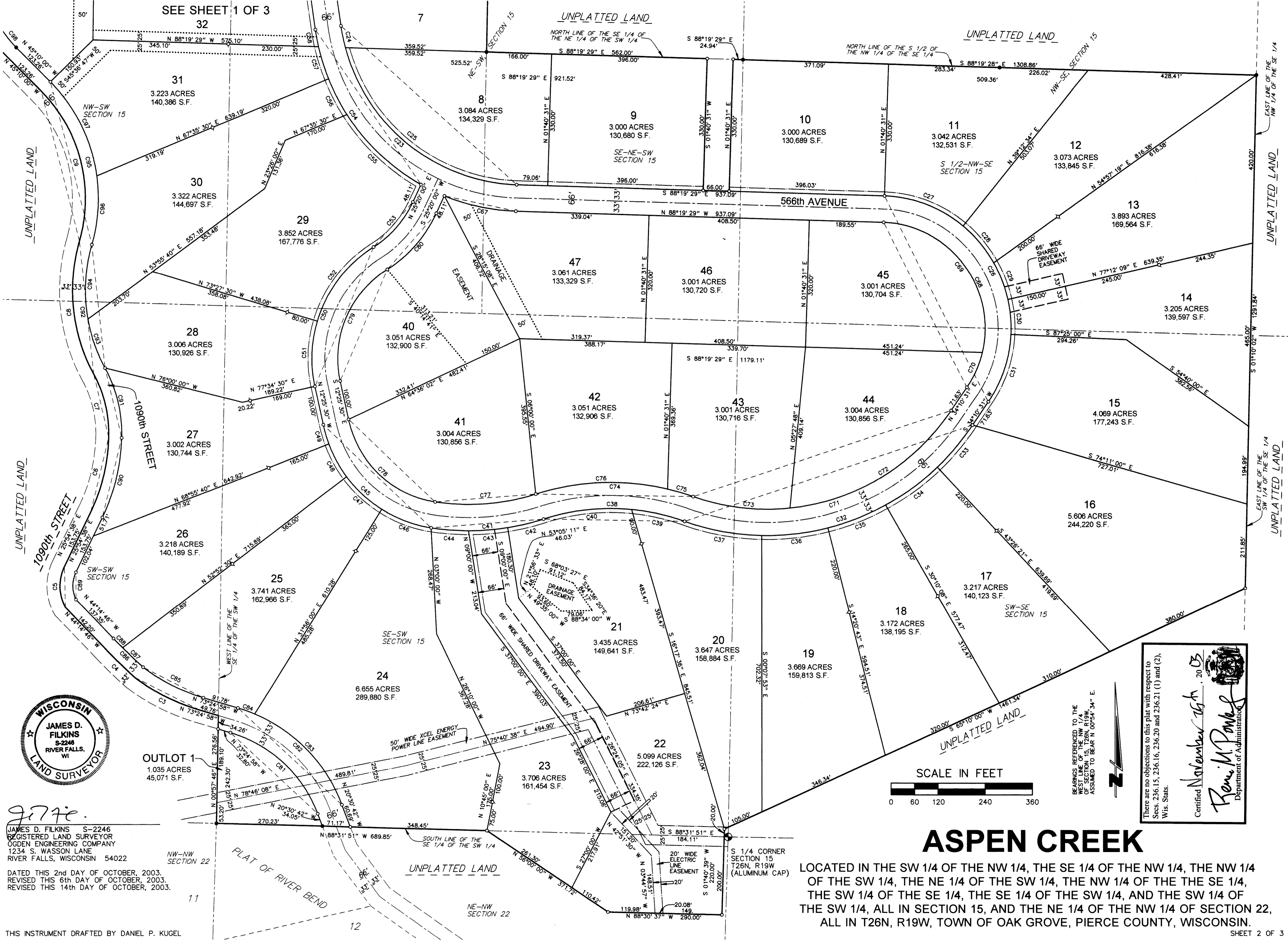


Received: 10/17/2003

24165

0530



JAMES D. FILKINS S-2246
 REGISTERED LAND SURVEYOR
 OGDEN ENGINEERING COMPANY
 1234 S. WASSON LANE
 RIVER FALLS, WISCONSIN 54022

DATED THIS 2nd DAY OF OCTOBER, 2003.
 REVISED THIS 6th DAY OF OCTOBER, 2003.
 REVISED THIS 14th DAY OF OCTOBER, 2003.

THIS INSTRUMENT DRAFTED BY DANIEL P. KUGEL



BEARINGS REFERENCED TO THE
 MERIDIAN OF SECTION 15, T26N, R19W,
 OF SECTION 15, T26N, R19W,
 ASSUMED TO BEAR N 00°54'34" E.

There are no objections to this plat with respect to
 Secs. 236.15, 236.16, 236.20 and 236.21 (1) and (2),
 Wis. Stats.

Certified November 15th, 2003

Rene M. Paves
 Department of Administration

ASPEN CREEK

LOCATED IN THE SW 1/4 OF THE NW 1/4, THE SE 1/4 OF THE NW 1/4, THE NW 1/4 OF THE SW 1/4, THE NE 1/4 OF THE SW 1/4, THE NW 1/4 OF THE SE 1/4, THE SW 1/4 OF THE SE 1/4, THE SE 1/4 OF THE SW 1/4, AND THE SW 1/4 OF THE SW 1/4, ALL IN SECTION 15, AND THE NE 1/4 OF THE NW 1/4 OF SECTION 22, ALL IN T26N, R19W, TOWN OF OAK GROVE, PIERCE COUNTY, WISCONSIN.